

Inverter Driven Heat Pump

12,000 BTU Slim Duct Type

Job Name \_\_\_\_\_  
 Location \_\_\_\_\_  
 Engineer \_\_\_\_\_  
 Submitted To \_\_\_\_\_  
 Submitted By \_\_\_\_\_  
 Reference \_\_\_\_\_

Date \_\_\_\_\_  
 Approval \_\_\_\_\_  
 Construction \_\_\_\_\_  
 Unit No \_\_\_\_\_  
 Drawing No \_\_\_\_\_

**PRODUCT FEATURES**

- Automatic Changeover
- Auto/Cool/Dry/Fan/Heat Modes
- 24 Hr./Weekly timer
- Built in Condensate Pump
- Economy Mode
- Auxiliary Heat Control Logic
- Auto Restart



**MODEL NUMBERS**

Indoor Unit	ADUH12LUAS1
Nominal Capacity	12,000

**LINESET REQUIREMENTS**

Connection Method		Flare
Liquid	in (mm)	Ø1/4 (Ø6.35)
Gas		Ø3/8 (Ø9.52)
Drain hose	Material	PVC
	in	Ø 1 (I.D.), Ø 1-1/4 (O.D.)
	mm	Ø 25 (I.D.), Ø 32 (O.D.)

**INDOOR DIMENSIONS & WEIGHT**

Net (H x W x D)	in	7-13/16 x 27-9/16 x 24-7/16
	mm	198 x 700 x 620
Gross (H x W x D)	in	10-13/16 x 37-3/16 x 30-3/8
	mm	274 x 945 x 772
Net Weight	lb (kg)	37 (17)
Gross Weight		49 (22)

**ELECTRICAL SPECIFICATIONS**

Voltage/Frequency/Phase		208/230 V ~ 60 Hz
Voltage Range		187-264 V
Running Current	A	0.35
Input Power	W	58

**SOUND PRESSURE**

Indoor Unit	Cooling	High	dB (A)	29
		Medium		28
		Low		27
		Quiet		26
	Heating	High	dB (A)	29
		Medium		28
		Low		27
		Quiet		24

**FAN DATA**

Airflow Rate	Cooling	High	CFM (m3/h)	382 (650)
		Medium		353 (600)
		Low		324 (550)
		Quiet		283 (480)
	Heating	High	CFM (m3/h)	382 (650)
		Medium		353 (600)
		Low		324 (550)
		Quiet		283 (480)
Recommended Static Pressure	WG (Pa)		0 to 0.36 (0 to 90)	

**Warranty Information**



7 Year Compressor, 5 Year Parts out-of-the-box Warranty



10 Year Compressor, 10 Year Parts Warranty when registered within 60 days of installation in a residence



12 Year Compressor, 12 Year Parts Warranty when registered within 60 days of installation in a residence, and installed by a Fujitsu Elite contractor

**ACCESSORIES**

UTY-RNRUZ Series	Wired Remote Controller
UTY-RSRY	Simple Remote Controller
UTY-RHRY	Simple Remote Controller
UTY-LBTUM	IR Kit (Remote & IR Receiver Unit)
UTY-TFSXZ2	Wireless LAN Interface
UTY-TTRXZ1	24V Thermostat Interface
UTD-VMSX	MODBUS Converter
FJ-AC-BAC-1L	BACnet Gateway
UTD-GXTB-W	Auto Louver Grille Kit
UTY-XWZXZG	External Connect Kit



Effective Date: 2/16/2022

Version ADUH12LUAS1 -2022A

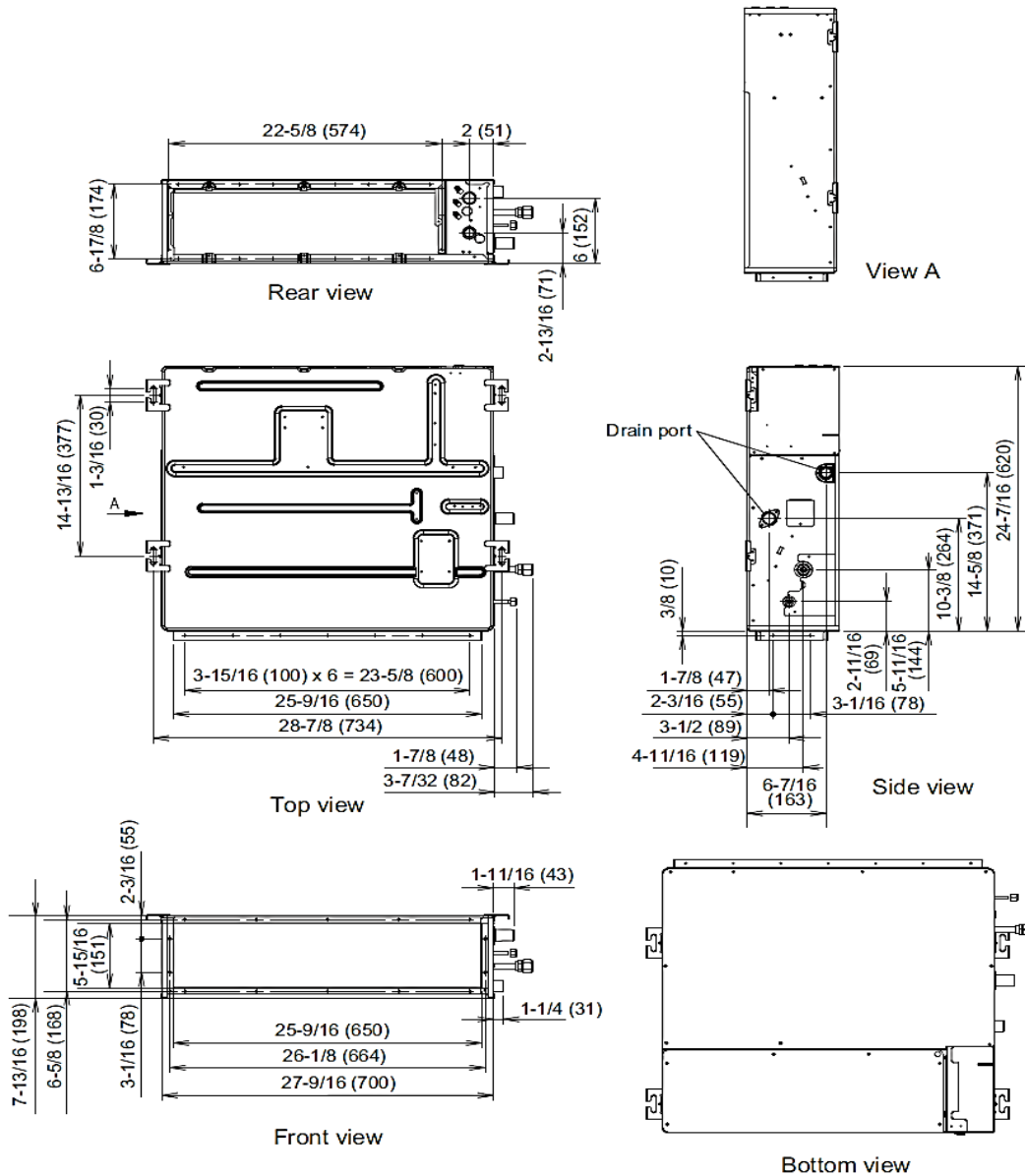
Due to continuous product improvements, specifications are subject to change without notice. Please log in to the Fujitsu Portal for the most up-to-date documentation <https://connect.fujitsugeneral.com>

Inverter Driven Heat Pump

12,000 BTU Slim Duct Type

DIMENSIONS

Units: In. (mm)



The Fujitsu logo is a worldwide trademark of Fujitsu General Limited. The Halcyon logo and name is a worldwide trademark of Fujitsu General America, Inc. Fujitsu's products are subject to continuous improvements. Fujitsu reserves the right to modify product design, specifications and information in this brochure without notice and without incurring any obligations.

Note: Specifications are based on the following conditions:  
 Cooling: Indoor temperature of 80°F (26.7°C) DB/67°F (19.4°C) WB, and outdoor temperature of 95°F (35°C) DB/75°F (23.9°C) WB. Heating: Indoor temperature of 70°F (21.1°C) DB/60°F (15.6°C) WB, and outdoor temperature of 47°F (8.3°C) DB/43°F (6.1°C) WB. Pipe length: 25ft. (7.5m), Height difference: 0ft. (0m) (Outdoor unit - indoor unit).