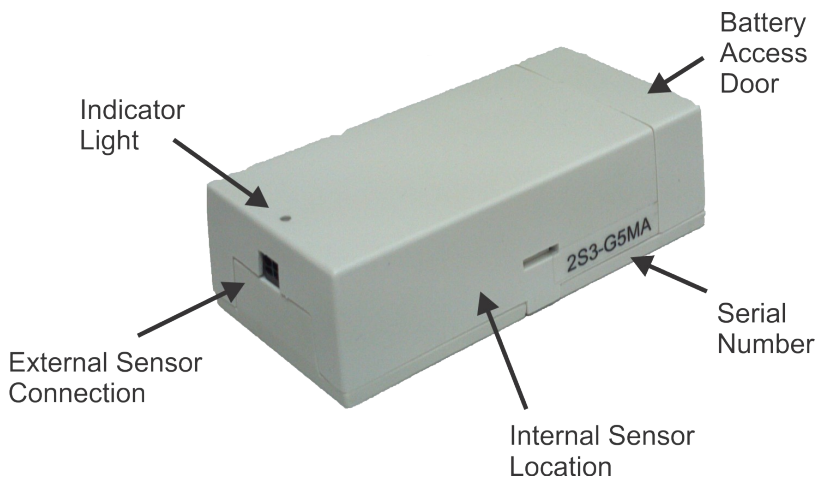


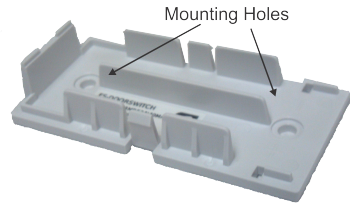
System Components

The Open Door Sensor is used to detect the current position of a door or window and wirelessly notify a Pelican Thermostat. The Thermostat will temporarily turn the system off during times when the door or window is open. The Open Door Sensor is a single compact module with an internal magnetic field sensor and an alternate external connection for use with other mechanical sensing devices. This product includes the sensor module, 2 AA batteries, 1 magnet, and mounting hardware.

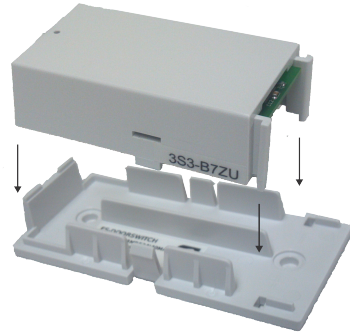


Mounting and Assembly

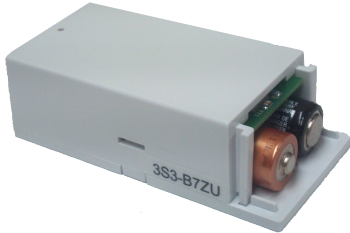
1. Mount the base in the desired location using screws in the 2 mounting holes.



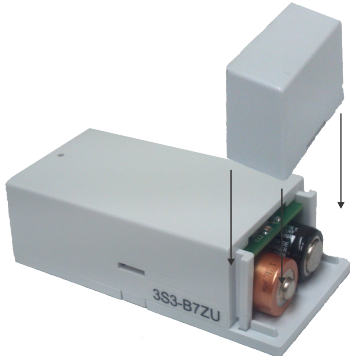
2. Line up the Top Cover with the base and snap it into place.



3. Install two AA batteries (included) by sliding them into the unit. Make sure the battery polarity matches the "+" and "-" indicators on the base.



4. Slide the battery door into place.



Installation Location – Internal Sensor

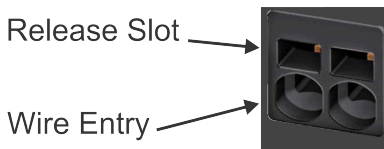
For proper operation the magnet must be within 1/4” of the internal sensor when the door is in the closed position. The internal sensor location is indicated in the picture on the front cover of this guide. The base of the Door Sensor also has a label indicating the location of the internal sensor. The Sensor should be mounted in the door jam in a location that will allow the free movement of the door. The magnet should be mounted directly to the door so that when the door is closed the magnet lines up with the internal sensor location.

Installation Location – External Sensor

The Door Sensor has a two input spring clip connector located on the end of the sensor (as shown on the front cover of this guide). This connector accepts a dry contact input. Any type of external device which has dry contact outputs can be used with the Door Sensor. The Door Sensor requires “CLOSED” contacts to indicate that the door is closed and “OPEN” contacts to indicate that the door is open. A typical external input device would be a magnetic reed switch matched with a magnet.

When using an external sensor the Door Sensor can be located up to 20 feet away.

Use standard thermostat wire or 18-24 gauge wire to connect the external sensor to the Door Sensor. The terminals use spring cage connections. The wires should first be stripped to expose 1/4” of wire. Each terminal has a release slot and a round hole (See Diagram) . Insert the exposed wire end into the round hole and it will be held in place by the internal spring cage.



To remove an already inserted wire, a small (2mm) flat blade screw driver is first inserted into the release slot. This will open the spring cage allowing the wire to be removed.

Configuration

All of the configuration settings can be made through the Pelican Site Manager Web Application. These can be found under the *Admin-> Remote Device Config* section. Each Door Sensor will be listed with its serial number and the label *Sensor Setup*.

NOTE: To assist in configuring this unit, write down the Serial Number of the Door Sensor and make a note of which thermostat it will be linked with. This information will be used during setup using the Pelican Site Manager Application.

Indicator Light

The indicator light on the top of the unit can be used to verify installation. Possible indications are:

1. Light Off – This is the normal operating mode of the unit.
2. Light Blinking – This indicates that the unit is trying to connect to the Pelican Wireless Network and communicate with the Cloud Servers.
3. Light Solid On – During the first two minutes of power the light will be continuously on if the unit is either sensing the magnet from the internal sensor or if the external sensor connection has CLOSED contacts.